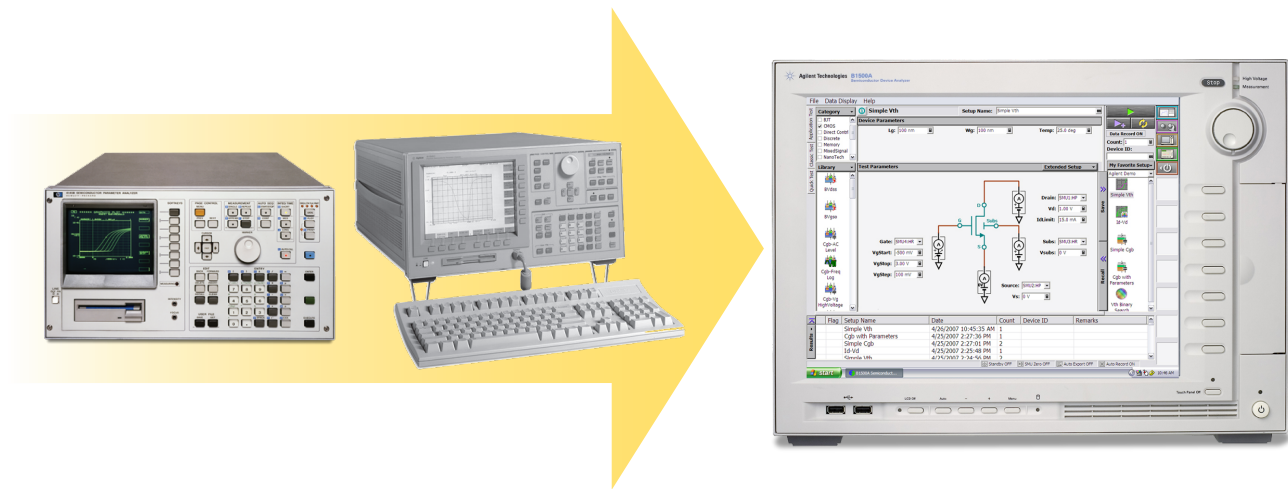


Agilent B1500A

Semiconductor Device Analyzer

Get a trade-in credit of up to \$5,200 now through 30 April 2011!



Trade-in your Agilent 4145/4155/4156/4157 or Keithley 4200-SCS and save up to \$5,200 on a new B1500A Semiconductor Device Analyzer

For a limited time you can trade-in your Agilent 4145A/B, 4155A/B/C, 4156A/B/C, 4157A/B or Keithley 4200-SCS semiconductor parameter analyzer and receive a trade-in credit of up to \$5,200 towards the purchase of a new B1500A Semiconductor Device Analyzer. Upgrade your equipment and begin enjoying all the benefits of the B1500A with EasyEXPERT software.



Agilent Technologies

Why Upgrade to the B1500A?

- **Agilent B1500A provides a complete parametric test solution**

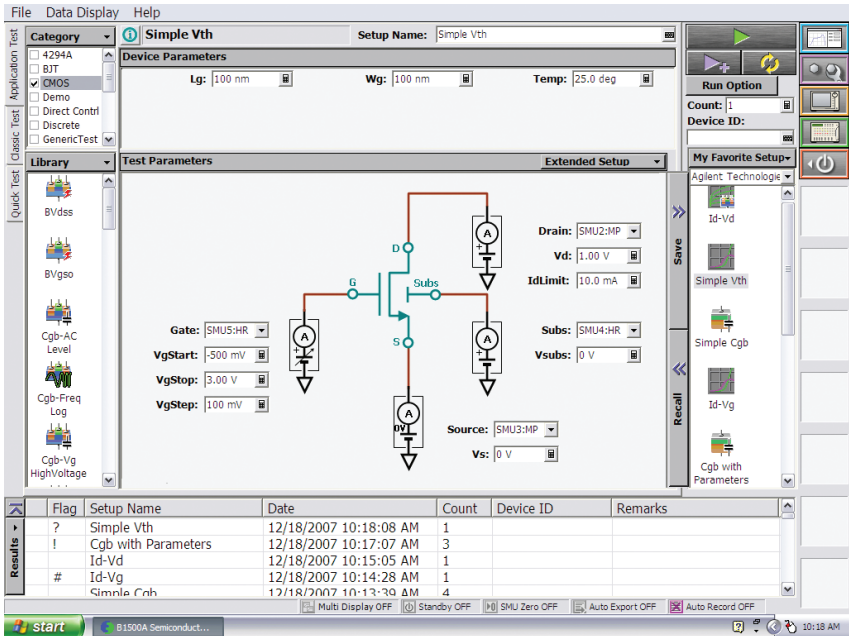
The B1500A with EasyEXPERT software supports all aspects of parametric test, from basic manual measurements to test automation across a wafer in conjunction with a semiautomatic wafer prober. The 3.1 version of EasyEXPERT provides a wide array of measurement functions: sweep/spot, multichannel sweep, list sweep, time sampling, quasi-static CV, high frequency CV (to 5 MHz), and a direct control mode. EasyEXPERT is also supplied with an extensive library of over 230 application tests.

- **Integrated CV/IV switching capability enhances accuracy**

The B1500A offers a multi frequency capacitance measurement unit (MFCMU), which is capable of making CV measurements from 1 kHz to 5 MHz. An optional SMU CMU unify unit (SCUU) is also available, and it supports capacitance versus voltage (CV) and current versus voltage (IV) switching in positioner-based wafer probing environments. This integrated functionality eliminates the common measurement errors that frequently occur when using a separate external capacitance meter.

- **HV-SPGU supports advanced NVM cell characterization**

The B1500A supports a high-voltage semiconductor pulse generator unit (HV-SPGU). The HV-SPGUs have ± 40 V output capability (80 V peak-to-peak) with 1 mV voltage force resolution. Pulse widths of 10 ns with 8 ns rise/fall times are supported.



The B1500A's intuitive EasyEXPERT software includes over 230 application tests, conveniently organized by device type and application.

Each HV-SPGU has two channels, and up to five HV-SPGUs can be installed in a B1500A, for a maximum of ten channels per B1500A. The new HV-SPGUs enable efficient characterization of state-of-the-art NAND and NOR Flash as well as other types of exotic NVM technologies.

- **Desktop EasyEXPERT software improves productivity**

Desktop EasyEXPERT software provides all of the benefits of the B1500A EasyEXPERT interface on a stand-alone PC. In offline mode you can perform important tasks such as analyzing data and creating new application tests. In online mode you can control the B1500A (as well as other instruments) via GPIB from a separate PC.

- **New WGF MU module meets advanced device high-speed characterization challenges**

A waveform generator/fast measurement unit (WGF MU) module is available for the B1500A, with first shipments in October 2008. Each WGF MU module has two channels, and up to five WGF MUs can be installed in a single B1500A, for a maximum of ten channels per B1500A. This module integrates arbitrary linear waveform generation (ALWG) capability with high-speed (5 ns sampling interval) current and voltage measurement. Applications covered by this module include pulsed IV measurement, advanced NBTI/PBTI measurement, RTS noise measurement, MEMS capacitor characterization, PRAM/ReRAM characterization, as well as other types of transient or time-domain measurement.

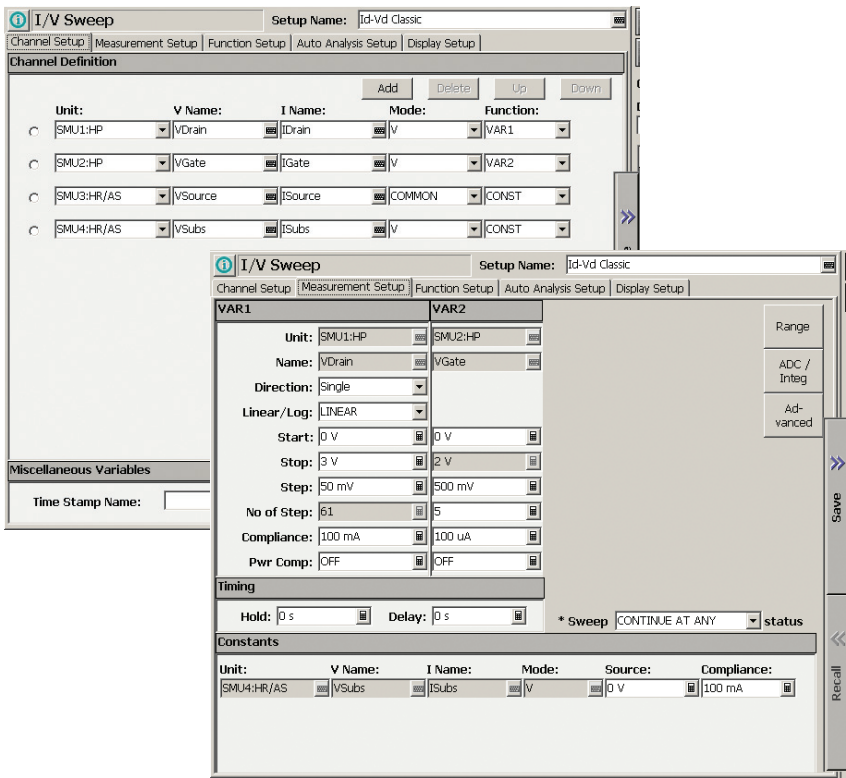
Agilent makes it easy to upgrade

- **Classic Test mode provides familiar yet improved interface**

For users who prefer the 4155/4156 user interface, the B1500A offers a classic test mode. This mode not only maintains the look, feel, and terminology of the 4155/4156 interface, it enhances user interaction by taking full advantage of Microsoft Windows® GUI features.

- **Agilent 4155/4156 setup converter tool eases transition**

Agilent supplies a free setup converter tool that runs on any Windows-based PC. This enables effortless transfer of existing 4155/4156 measurement setup files to the B1500A. The tool takes 4155 and 4156 measurement setup files (with extension “MES” or “DAT”) and converts them into equivalent EasyEXPERT 4155/4156 classic test mode setup files. By eliminating the need to recreate measurement setups, you can accelerate your transition to the B1500A.



EasyEXPERT has a classic test mode that duplicates the look-and-feel of the 4155/4156 user interface.

More information about

The Trade-In program can be found at www.agilent.com/see/B1500A by selecting the “Product Library” tab and clicking on the “Brochures and Promotional Materials” link.

General information on Agilent trade-in programs can be found at www.agilent.com/find/trade.

Trade-in Credit	
Product	Trade-In Credit (USD)
4145A	3,900
4145B	3,900
4155A	3,900
4155B	5,200
4155C	5,200
4156A	3,900
4156B	5,200
4156C	5,200
4157A	5,200
4157B	5,200
Keithley 4200-SCS	5,200



Agilent Email Updates

www.agilent.com/find/emailupdates

Get the latest information on the products and applications you select.



Agilent Advantage Services is committed to your success throughout your equipment's lifetime. We share measurement and service expertise to help you create the products that change our world. To keep you competitive, we continually invest in tools and processes that speed up calibration and repair, reduce your cost of ownership, and move us ahead of your development curve.

www.agilent.com/find/advantageservices



www.agilent.com/quality

www.agilent.com

For more information on Agilent Technologies' products, applications or services, please contact your local Agilent office. The complete list is available at:

www.agilent.com/find/contactus

Americas

Canada	(877) 894 4414
Brazil	(11) 4197 3500
Mexico	01800 5064 800
United States	(800) 829 4444

Asia Pacific

Australia	1 800 629 485
China	800 810 0189
Hong Kong	800 938 693
India	1 800 112 929
Japan	0120 (421) 345
Korea	080 769 0800
Malaysia	1 800 888 848
Singapore	1 800 375 8100
Taiwan	0800 047 866
Other AP Countries	(65) 375 8100

Europe & Middle East

Belgium	32 (0) 2 404 93 40
Denmark	45 70 13 15 15
Finland	358 (0) 10 855 2100
France	0825 010 700*
	*0.125 €/minute
Germany	49 (0) 7031 464 6333
Ireland	1890 924 204
Israel	972-3-9288-504/544
Italy	39 02 92 60 8484
Netherlands	31 (0) 20 547 2111
Spain	34 (91) 631 3300
Sweden	0200-88 22 55
United Kingdom	44 (0) 118 9276201

For other unlisted Countries:

www.agilent.com/find/contactus

Revised: October 14, 2010

Product specifications and descriptions in this document subject to change without notice.

© Agilent Technologies, Inc. 2010
Printed in USA, October 26, 2010
5989-6905EN



Agilent Technologies